



# WILKINSBURG STAMP CLUB NEWS

Wilkinsburg Stamp Club P.O. Box 10552 Pittsburgh, PA 15235-0552

<http://www.wilkinsburgstampclub.com>

Member of The American Philatelic Society #12293

Volume 18 Issue 8  
February 2019



**Philately** - is the study of stamps and postal history and other related items.

It also refers to collecting, research, and enjoyment, of stamps and other philatelic products.

**Contact Information;**

Please update your email address so we can notify you quickly with any urgent matters.

## Canada Post's 2019 Stamp Program



Canada Post announced the subjects of stamps that are going to be released in 2019. On 14th January 2019, a set in the "From Far and Wide" series and new definitive stamps featuring Queen Elizabeth II were issued.

The Year of Pig Stamp was released on 18th January.



A stamp or stamps honoring Albert Jackson, the first black Canadian letter carrier, will be released in February 2019. It will be a part of "Black History series" that was introduced in 2009. Jackson was born into slavery in Delaware during the late 1850s and escaped with his mother and six siblings from the United States to Canada via the Underground Railroad when he was a young child. He worked for the post

office in Toronto since 1882 for 36 years until he died in 1918.

Stamps featuring gardenias will also be released in February 2019. It's a part of the Flower series. Another stamp commemorating Vancouver Asahi baseball team will also be released in the same month. The team was formed in 1914 and was disqualified in 1942 when its Japanese-Canadian members were interned by Canada in World War II.

Another commemorative stamp honoring the Red River Resistance of 1869-70 and the founding of Manitoba will also be released in 2019. Other stamps will feature Bears, endangered turtles, historic covered bridges and desserts. Community Foundation semipostals will be issued by the end of 2019 along with sacred and secular stamps celebrating Christmas. There is a possibility that the program might be revised.

### Inside this issue:

- Club News 2
- Royal Faux Pas 2
- Preview of Great Britain's 2019 Issues 2
- Stamp Shows 3
- WILKPEX 2019 3
- Linn's 2018 US popularity poll 3
- Meeting Times/Dates 3
- USPS dates of issue
- Junior Corner – Panes and Sheets 4
- Officers / Contact Info 4
- 50 Years Ago 4

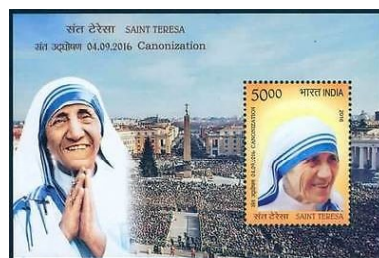
### Notable People on Stamps: St. Mother Teresa

**Mother Teresa** was a Roman Catholic nun who devoted her life to serving the poor and destitute around the world, known as the 20th Century's greatest humanitarian. She received Padma Shri in 1962, Bharat Ratna (India's highest civilian award) in 1980. She became 7th living person depicted on Indian Stamps (Date of Issue: 27-8-1980).



Three postal administrations closely associated with Mother Teresa issued stamps to com-

memorated her canonization. Pope Francis declared her St. Teresa of Calcutta (Kolkata) before an estimated crowd of 120,000 Sunday, Sept. 4, 2016 at St. Peter's Square in Vatican City. The Vatican City issued a single stamp Sept. 2. India issued a souvenir sheet Sept. 4, and Albania issued a stamp and a mini sheet of 9 along with a booklet sheet on that date.



Vatican and Albanian Stamp Canonization of St. Teresa

### Booklet cover & stamp below



**Club News**

We had a good turnout for the meeting on the 13th., Several boxes of stamps were donated by John Farkas and brought to the meeting by Andy. These items are being sold with the profits going into the club treasury. Many Thanks to the friend of John Farkas for the donation.

Nice turnout for the meeting despite the snow in the morning President Andy Novonty was not present at the meeting on the 27, as he is recovering at home after surgery, best wishes, Andy, we missed you.

Mr. Jim Reeves drove in from Huntingdon to set up his items for sale. He had a brisk business through out the meeting...

Gene Bujdos is still working to secure the rights for the cachet for the show.

Watch future newsletters for a possible drawing for one of the rare 1961 Wilkinsburg Stamp Club Souvenir Sheet.

This year the club is offering to it's members a smaller display frame for competition at WILKPEX. An example of the frame was shown at the January 27th meeting. This offers first time displayers a chance to compete without the need of filling the bigger frames. These frames could be done at home and brought to the show.



**Dates of Issue USPS**

- Hearts Blossom** Forever Jan. 10th San Juan, PR
- Year of the Boar** Forever stamp Jan. 17 | Houston, TX
- Uncle Sam's Hat** Additional Ounce (15¢) Rate stamp Jan. 27 | Kansas City, MO
- US Flag** (55¢) Forever Jan. 27 Kansas City, MO
- California Dogface** non-machineable Butterfly Jan. 27 Kansas City, MO
- Joshua Tree** \$7.35 Priority Mail January 27 Kansas City, MO
- Bethesda Fountain** \$25.50 Express Mail stamp Jan. 27 Kansas City, MO
- Gregory Hines** Forever Jan. 28 New York, NY
- Cactus Flower** Forever Feb. 15 Mesa, AZ (at AmeriStamp/ARIPEX)
- Alabama Statehood** Forever Feb. 23 | Huntsville, AL

**New Members**

**Welcome** to our new members

**Marie O'leary**  
Marie collects US stamps, and is often seen helping Mickey Iannone at stamp shows. She is from Munhall

**Marti W Baran**  
Marti is renewing her interest in stamps after a long hiatus. She loves the history represented in stamps. Marti is from Churchill



**HAPPY VALENTINE'S DAY!**

**Oops! = Royal Post Faux Pas**



Royal Mail has withdrawn a stamp design marking the 75th anniversary of D-Day - after BBC News pointed out it showed US troops landing in what was Dutch New Guinea, nearly 8,500 miles from France.

The image appears on the American National WWII Museum website, attributed to the US Coast Guard, and is said to show troops carrying stretchers from a landing craft at Sarmi, Dutch New Guinea on 17 May 1944.

The D-Day landings did not take place until 6 June that year, when British, US and Canadian forces landed on the beaches of northern France.

The landings were the first stage of Operation Overlord - the Allied invasion of Nazi-occupied Europe - and were intended to end World War II

Royal Post apologizes;

*"We sincerely apologize that our 2019 Special Stamp preview included a design which had been incorrectly associated with the D-Day landings,"*

*"This stamp design has not been printed. We would like to reassure our customers that this image will not be part of the final set."*

**Preview of the 2019 stamps of England**



Showcasing the 'Best of British', the program features a range of subjects:

2019 marks the bicentenaries of the birth of both Queen Victoria and Prince Albert. She is the second longest reigning monarch in British history, and six stamps will chart her life in period paintings, from childhood and marriage to Prince Albert, to marking her long reign.

The accompanying stamps in the mini-sheet will pay tribute to her husband, Prince Albert.

The 75<sup>th</sup> anniversary of the D-Day Landings will be marked by a set of Special Stamps. The issue will be a commemoration of all those who participated and will use images from the day.

The images in the Birds of Prey stamp issue have all been photographed by Tim Flach. The birds featured all breed in the UK, captured in characteristic

poses of flight or in close up to show their features. Species include: Red Kite, Sparrow Hawk, Merlin, Golden Eagle and Kestrel.

The British Engineering stamp issue is a celebration of UK excellence in engineering over the past 50 years and wide range of engineering disciplines where the UK continues to make its mark.

Other stamp issues to be released during 2019 include: Curious Customs; Forests; and Royal Navy Ships.



Stamp Classics souvenir sheet of six stamps Jan. 15. The stamp-on-stamp designs feature stamps from the reigns of six British monarchs. The sheet with three first-class rate stamps and three international rate stamps is being sold for the face value of £6.66

**Upcoming Stamp, Shows**

**MSDA Winter Cincinnati Show**  
February 16-17, 2019

**Sponsored by:** Midwest Stamp Dealers Association

**Location:** Four Points by Sheraton Cincinnati North, 7500 Tylers Place Boulevard, West Chester, Ohio 45069

**Contact:** Jim Bardo,  
**E-mail:** jfb7437@aol.com  
**Phone:** 847-922-5574

**Website:**  
<http://www.msdestamp.com>

**Montrose Stamp Bourse**

Feb 17th, 2019

**New Location:**

Holiday Inn - Akron west  
4073 Medina Road  
Akron, OH 44333

**Contact:** David Pool  
**Phone:** 330-832-5992  
**Hours:** Sun 10-4

**Toledo Stamp Expo 2019**

February 22-23, 2019

**Sponsored by:** Stamp Collectors Club of Toledo

**Location:** Holland Gardens, 6530 Angola Rd., Holland, Ohio 43528

**Contact:** Charles Habilitzel, president@toledostampclub.org  
**Phone:** 419-297-7604

**Website:**  
<http://www.toledostampclub.org>

**McKinley 88th Annual Stamp Club Show**

Mar 2nd - 3rd, 2019

**Location:** St. George Serbian Orthodox Social Hall  
4667 Applegrove St. NW  
North Canton, OH 44720

**Contact:** David Pool  
**Phone:** 330-832-5992  
**Hours:** Sat 10-5, Sun 10-4  
**Website:** mksc.webs.com

**WILKPEX 2019**

WILKPEX 2019

show dates are  
Friday, May 31st, 2019  
Saturday, June 1st, 2019

**This is a Friday and Saturday!**

It will still once again held at Gateway Hall in Monroeville. Times for the show will be 10-5 on Friday and 10-5 on Saturday.

Set up will be Thursday evening.

Time to start preparing your exhibits. Contact **Andy Novotny** novoand@hotmail.com or at a meeting, as soon as possible with the number of frames you will need and the title of your exhibit... There are smaller frames available for those new to exhibiting or those with content that require less pages.

New flyers for the show will be available at the meetings.

**WSC Newsletter**

It's your newsletter!

Help Make it special

Original articles for the newsletter may be submitted by any of the membership to Deb Foltyn at a meeting, mailed or emailed  
E-mail [Quest4moos@msn.com](mailto:Quest4moos@msn.com)

Regular mail:  
Deb Foltyn  
1023 Brintell Street  
Pittsburgh, PA15201-1637

Ideas or content suggestions are welcome.

*Note\* articles submitted may be edited for content or to fit the Format.*

Club members get a free black and white hard copy of the newsletter.

**Linn's 2018 U.S. Stamp Popularity Poll**

Select from the following list the 2018 commemorative stamps; 2018 definitive and special stamps; and 2018 postal stationery that have the best and worst designs in your opinion, as well as those you feel are the most important and least necessary in subject.

**VOTE BY THE NUMBER PRECEDING THE ISSUE NAME ONLY**

**Commemorative stamps**

1. Year of the Dog	2. Lena Horne	3. Bioluminescent Life
4. Illinois Statehood	5. Mister Rogers	6. STEM Education
7. United States Airmail (blue)	8. Sally Ride	9. Flag Act of 1818
10. O Beautiful	11. Scooby-Doo	12. World War I: Turning the Tide
13. The Art of Magic	14. Dragons	15. United States Airmail (red)
16. John Lennon	17. Honoring First Responders	18. Hot Wheels

**BEST DESIGN** \_\_\_\_\_ **WORST DESIGN** \_\_\_\_\_ **MOST IMPORTANT** \_\_\_\_\_ **LEAST NECESSARY** \_\_\_\_\_

**Definitive and special stamps**

19. Love Flourishes	20. Lemon	21. Byodo-In Temple
22. Sleeping Bear Dunes	23. U.S. Flag	24. Peace Rose
25. Frozen Treats	26. Statue of Freedom	27. Poinsettia
28. Birds in Winter	29. Madonna and Child by Bachiacca	30. Kwanzaa
31. Sparkling Holidays Santa	32. Hanukkah	

**BEST DESIGN** \_\_\_\_\_ **WORST DESIGN** \_\_\_\_\_ **MOST IMPORTANT** \_\_\_\_\_ **LEAST NECESSARY** \_\_\_\_\_

**Postal stationery**

33. Byodo-In Temple Priority Mail stamped envelope
--

**BEST DESIGN** \_\_\_\_\_ **WORST DESIGN** \_\_\_\_\_ **MOST IMPORTANT** \_\_\_\_\_ **LEAST NECESSARY** \_\_\_\_\_

Now vote for your single personal favorite stamp issue of 2018. Your choice can be from the commemorative, definitive-special or postal stationery categories. Se-tenant issues (different designs in one pane) are counted as one issue.

**MY FAVORITE 2018 STAMP**

Please write in number and stamp issue name:

No. \_\_\_\_\_ Issue \_\_\_\_\_

**Meetings**

**ALL Visitors are welcome!**

We meet the 2nd & 4th Sundays  
*No Holidays*  
Next meetings

**February 10th, 2019**

**February 24th, 2019**

*Summers Meetings*

June thru August  
2nd Sundays only

Doors Open 12:30

Meeting starts at 2PM

Churchill Borough Building,  
2300 William Penn Hwy  
Churchill, PA 15235.

*Free light lunch available*

**DUES ARE ONLY \$8.00 PER FISCAL YEAR (JULY-JUNE)**

Members, can send check to:  
Wilksburg Stamp Club  
and sent to:

**Wilksburg Stamp Club**  
**P.O. Box 10552**  
**Pittsburgh, PA 15235-0552**

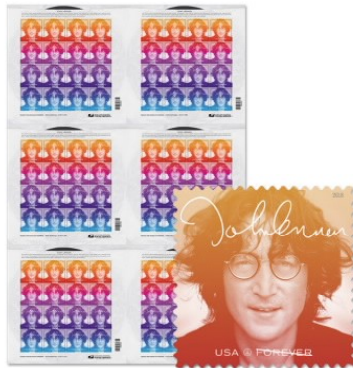
Send Ballot to: Linn's Stamp Poll, Box 4129, Sidney, OH 45365  
All Ballots must be received by March 1, 2019. Photocopied ballots are acceptable.  
Stamps are pictured in the January 2018 WSC newsletter...

**Junior Corner**

This month we will talk about Panes and sheets. One of the most misunderstood and misused terms in stamp collecting is "sheet of stamps." In common parlance, what collectors and noncollectors alike often refer to as a sheet of stamps is in fact a pane of stamps.

The sheet is the complete printing unit of stamps as it comes off the press, either as a sheet or part of a long roll called a web. The U.S. Postal Service (and its predecessor the U.S. Post Office Department) have occasionally sold full uncut sheets of stamps to the public. In 1935, uncut sheets of the special printings stamps (nicknamed Farley's Follies) were sold to the public. In 1994, the Postal Service

offered uncut press sheets of the 29¢ Legends of the West stamps (Scott 2869), and it has offered some issues in this format every year. Below one can easily see the six panes in the press sheet.



**From the Editor**



I am pleased to announce that this is the 12th, and final issue of Lunar Stamps by the USPS, otherwise known as Chinese New Year Issues.

In my opinion the Post Office has done a less than adequate job of designing stamps for this subject... I mean Flowers?

The years are represented by animals, These signs are the rat, ox, tiger, rabbit, dragon, snake, horse, sheep, monkey, rooster, dog and pig,...so why did they think flowers would make the grade? I say good riddance!

Deb Foltyn

**Officers**

**President:**

**Andy Novotny**  
novoand@hotmail.com

**Vice-President:**

**Laura Kaczynski**  
laurakac13@verizon.net

**Treasurer/Secretary &**

**Mailing Coordinator:**

**Danielle Weaver**  
dmm742000@yahoo.com

**Newsletter Editor &**

**Web Tech:**

**Deb Foltyn**  
quest4moos@msn.com

**WE'RE ON THE WEB!**  
**Wilkinsburgstampclub.com**

**WILKINSBURG STAMP CLUB**  
**Home of the Famous Satirical Souvenir**

**50 Years ago - February 1969**



Church of Brou at Bourg en Bresse

**France**  
Stamps were issued Feb. 15, 1969

After the death of her husband, Margaret of Austria decided to build the Royal Monastery of Brou outside Bourg-en-Bresse to house three sumptuous tombs (one each for her husband and mother, and one for herself).

The royal monastery of Brou is formed of monastic buildings arranged around a church and three cloisters. This church is a flamboyant Gothic masterpiece, unique in France.



Dam Vouglans (Jura)

**France**  
Stamps were issued Feb. 15, 1969

In 1968, the Dam of Vouglans, was built across the river Ain, creating a reservoir with 600 million cubic metres of water, its primary purpose being to generate electricity. This became Lake Vouglans. At 429 metres above sea level, the lake is 35 km long and covers 1,600 hectares.

It is the first dam built with a pure vault with spiral-shape horizontal arches.



Castle of Chantilly (Oise)

**France**  
Stamps were issued Feb. 15, 1969

The château, on a small rocky island in an artificial lake, was built in the 14th century and has since been restored several times. Now housing the Musée Condé, reportedly the best museum of art in all France, in 1886 it was bequeathed, together with its collections of the museum, library, and surrounding park, to the Institut de France by the duc d'Aumale.



La Trinité sur Mer. the marina

**France**  
Stamps were issued Feb. 15, 1969

The town is primarily a port, with a seaside quay dotted by numerous seafood restaurants. The town is also known for its watersport competitions. The Pont de Kerisper connects the commune to the neighboring Saint-Philibert. The current bridge is a replacement, built in 1956, of the previous bridge which was destroyed by German bombing